



## Orbit Group

Site Office:

The Springs Apartment Homes

Opposite Izmir Town, Canal Bank Road, Lahore.

Helpline: +92 304 111 8 100, Whatsapp: 0309 5555317

email: [info@springsapartmenthomes.pk](mailto:info@springsapartmenthomes.pk) | [www.springsapartmenthomes.pk](http://www.springsapartmenthomes.pk)



Printed: March 2023

  
**The Springs**  
Apartment Homes

## Springs Projects



### Springs Atrium, Gulberg, Lahore

This project is a unique development of modern living and a beautiful addition to high-rise apartment projects in downtown Gulberg, Lahore. Our smart and intelligently designed spaces span over 2 basements, ground plus 11 floors with a built-up area of 175,000 sqft. [Approximately].

### Springs Gaddafi, Gulberg, Lahore

The project is designed to offer a high standard of living in a compact space to ensure it remains within the affordability of our valued customers and to provide them with attractive capital, rental gains, and an opportunity of living in the heart of Lahore. The construction of the project is in full swing. The grey structure of the project is near completion.

### The Springs, Islamabad Expressway

The Springs Apartment Homes, Gangal West, Islamabad Expressway. An apartment building project of 265 apartments. The project was completed and handed over in 2016.



## MASTER PLAN 3D IMAGE





Alhamdulillah

**1050**  
**APARTMENTS**  
**SOLD OUT**

**ACTUAL PICTURE**

ہم آپ کے خواب کو حقیقت میں بدل رہے ہیں





## Possession Handing Over of Phase 1

### The Project

This modern purpose-built residential complex consists of five blocks around a developed landscaped courtyard with water features, outdoor activities, a play area for children, a jogging track, rooftop gardens, and a fully facilitated Royal club accessible to residents only. All residential blocks have high-speed elevators, uninterrupted power supply, and security systems.

**Phase I consists of 385 Apartments & Villas, which have been finished & being handed over to our valuable customers.**

  
**The Springs**  
Apartment Homes  
A Complete Bouquet of  
Life Style Dreams

Actual Pictures of Phase 1



Block 1

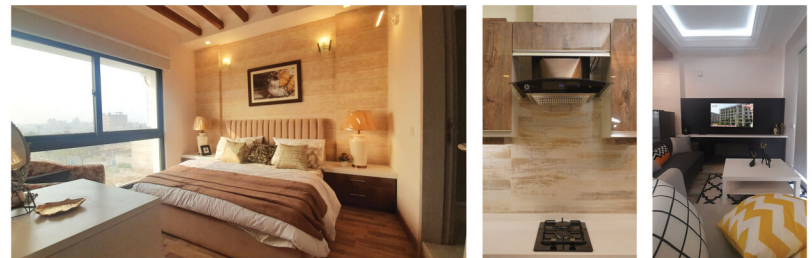
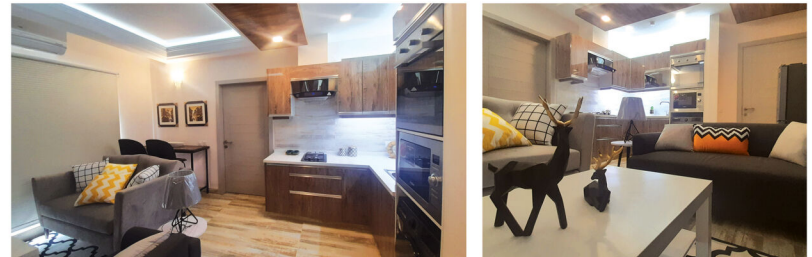


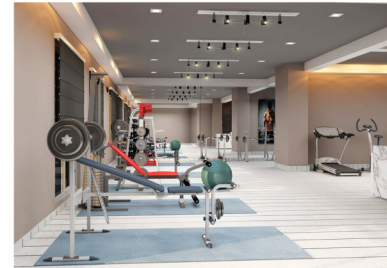
Block 2



Block 3

## Fully Furnished Apartments Available





## Central Courtyard & Royal Club

A place, where families, neighbors, and friends can come together to enjoy the safe and tranquil environment of the central courtyard. The community has a fully functional club that is accessible to its residents only. The state-of-the-art fitness center is outfitted with the finest exercise equipment.

### Royal Club House:

- Food Court
- Fine Dining
- Movie Theater
- All Weather Swimming Pool
- Children's Play Area
- Squash Court
- Basketball
- Table Tennis
- Cigar & Coffee lounges
- Sauna and Spa
- Rooftop Restaurant

### General Facilities:

- Grocery Store
- Beauty Salon
- Medical Facility
- ATM Machine
- Ladies & Gents Boutique
- Rent-a-Car Facility
- Laundry Service
- Availability of Drivers on hourly basis

## Studio



### Studio Apartment Gross Area: 563 sqft.

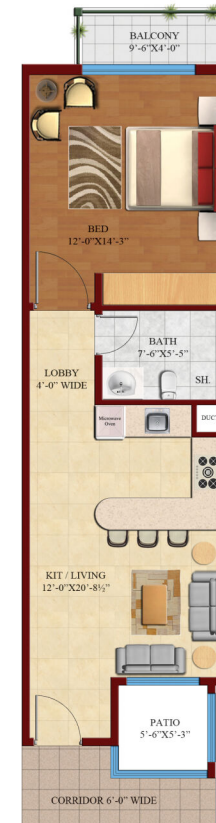
- |   |         |                 |
|---|---------|-----------------|
| 1 | Living  | 15'-0" x 11'-9" |
| 2 | Kitchen | 6'-1½" x 6'-1½" |
| 3 | Bath    | 8'-0" x 5'-3"   |
| 4 | Balcony | 4'-6" x 6'-2"   |



07

A concept of Hotel type living for a small family, students, and frequent domestic/international travelers.

## 1 Bed Apartment



### 1Bed Apartment Total Area 826 sqft.

- |   |                |                  |
|---|----------------|------------------|
| 1 | Bed Room       | 12'-0" x 14'-3"  |
| 2 | Bath Room      | 7'-6" x 5'-5"    |
| 3 | Patio          | 5'-6" x 5'-3"    |
| 4 | Kitchen/Living | 12'-0" x 20'-8½" |
| 5 | Balcony        | 9'-6" x 4'-0"    |



08

A concept of compact living space for a small family, students, and frequent domestic/international travelers.



## 2 Bed Apartment



### II Bed Apartment Total Area 1207 sqft.

1	Living	12'-10 1/2" X 15'-0"
2	Kitchen	18'-9" X 7'-9"
3	Bed Room	11'-8 1/2" X 13'-10 1/2"
4	Bath Room	5'-6" X 7'-9"
5	Balcony	10'-3" X 4'-0"
6	Bed Room	11'-9 1/2" X 12'-10 1/2"
7	Bath Room	5'-6" X 7'-9"
8	Duct	5'-3" X 5'-6"

### II Bed Apartment Total Area 1110 sqft.

1	Living/Kit/Dining	12'-1" X 20'-9"
2	Lobby	8'-7" X 9'-1 1/2"
3	Bed Room	12'-2 1/2" X 12'-2"
4	Bath Room	8'-0" X 5'-5"
5	Balcony	20'-0" X 6'-8 1/2"
6	Bed Room	11'-8" X 14'-0"
7	Bath Room	7'-11" X 5'-5"
8	Duct	5'-3" X 5'-6"

## Cigar & Coffee Lounge





## All Weather Swimming Pool

